

# MONTHLY MEMBERSHIP PROGRESS REPORT

District 49 B

Results as of: 2/29/2024

GMT:

LOCATION ALASKA

GMT CA

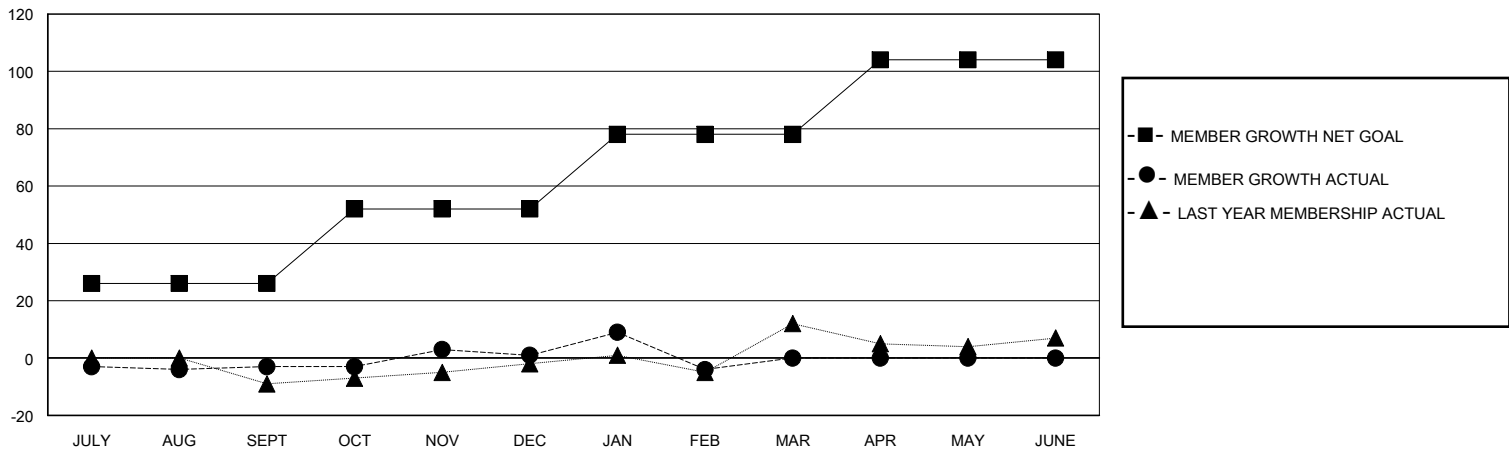
Clubs			
RESULTS FOR 2023-2024			
QUARTER	NEW CLUB GOAL	NEW CLUBS	DROPPED CLUBS
JULY/AUG/SEPT	0	0	0
OCT/NOV/DEC	0	0	0
JAN/FEB/MAR	0	0	0
APR/MAY/JUNE	1	0	0

Members			
RESULTS FOR 2023-2024			
QUARTER	MEMBER GROWTH NET GOAL	MEMBER GROWTH ACTUAL	DROPPED MEMBERS ACTUAL (including transfers)
JULY/AUG/SEPT	26	7	10
OCT/NOV/DEC	26	16	12
JAN/FEB/MAR	26	18	22
APR/MAY/JUNE	26	0	0

GOALS AND ACTUAL NEW CLUBS CUMULATIVE



GOALS AND ACTUAL MEMBERS CUMULATIVE



DROPPED CLUBS: 0	11 CLUBS OF 26 ADDED 1 OR MORE NEW MEMBERS	<b>GENDER DISTRIBUTION</b> MALE 438 (59.35%) FEMALE 300 (40.65%)
<b>DROPPED MEMBERS</b> DECEASED 3 CLUB CANCELLED 0 OTHER 41 TOTAL 44	<a href="#">CLICK HERE FOR CUMULATIVE MEMBERSHIP DATA</a>	TOTAL FAMILY UNIT MEMBERS 157 FAMILY MEMBERS PAYING HALF DUES 81